

# Revilla<sup>MR</sup>

SINTETICOS & BONDEADOS

MATERIALES PARA LA  
INDUSTRIA DE:



CALZADO



ACCESORIOS



MUEBLES



AUTOMOTRIZ

Tel: 477-454-1557  
gruporevilla.com



# ACTION LEATHER

USAR EN:



Industrial Deportivo Vestir

BLANCO 9858 | D20

ARENA BITONADO | SR6

## CARACTERÍSTICAS

Apto para: Corte

Espesor: 1.2 -1.8 mm

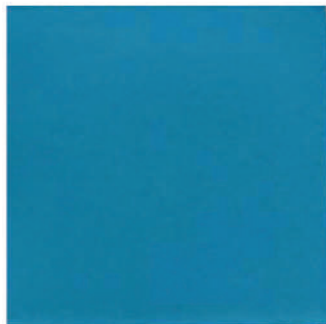
Cupon: 1,200 a 1,700 dm<sup>2</sup>

**Revilla**<sup>MR</sup>  
SINTETICOS & BONDEADOS

# ACTION LEATHER



BLUE JEANS 9299 | SR6



AZUL CIAN 8449 | MINI



AZUL 9689 | R61



MARINO 9676 | D21



GRIS BITONADO | SB12



MERCURIO 8756 | ORANGE



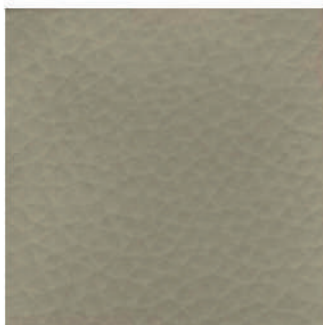
AMBROSIA 9722 DUAL | R61



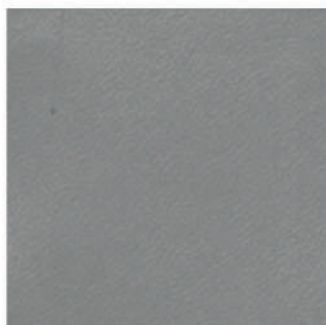
BLANCO 08 | R10



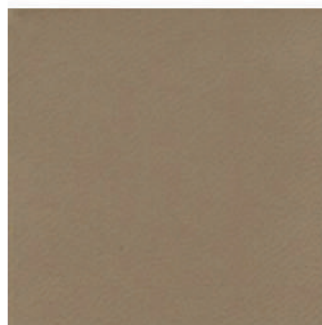
SMOKY BLACK 9745 | D34



ARENILLA 9657 | D21



KOALA 9506 | BOVI



ARABIA 9504 | BOVI



Poliuretano  
Carnaza



Resistente a  
rayaduras



Repelente  
al agua

**Revilla**<sup>MR</sup>  
SINTETICOS & BONDEADOS

# ACTION LEATHER



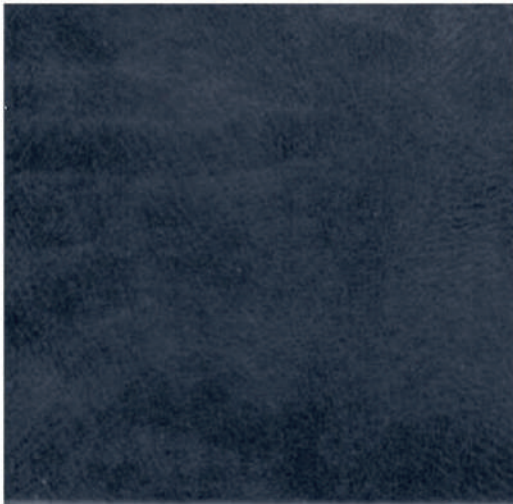
Poliuretano  
Carnaza



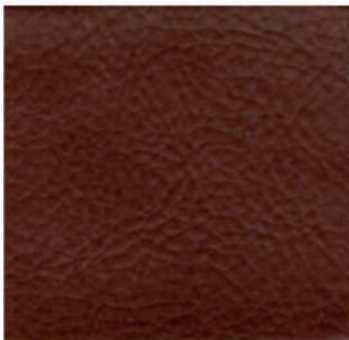
Resistente a  
rayaduras



Repelente  
al agua



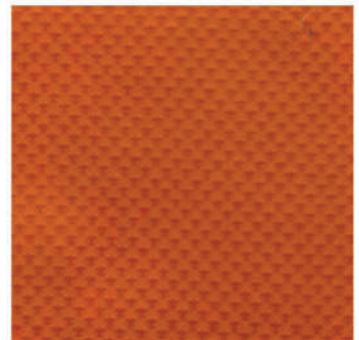
AZUL 9299 | SR6



CAFÉ 9774 | RM27



ROJO 9785 DUAL | D34



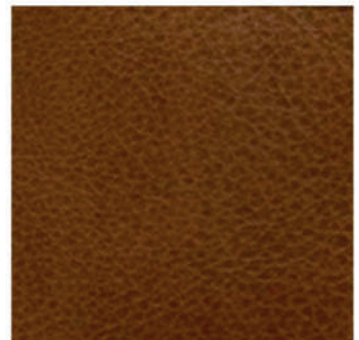
REY NARANJA 9290 | MALLA



NEGRO | R102



NEGRO | F14



TAPIZ 9324 | R26

**Revilla**<sup>MR</sup>  
SINTETICOS & BONDEADOS

# ACTION LEATHER



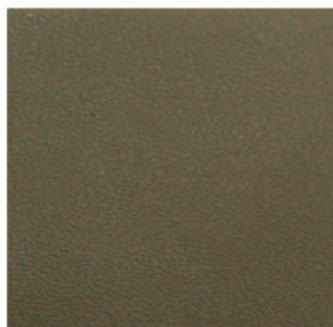
Poliuretano  
Carnaza



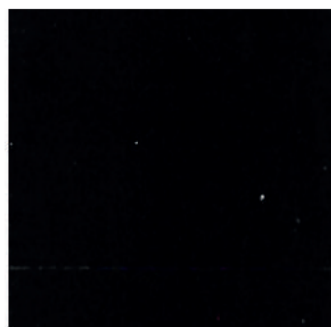
Resistente a  
rayaduras



Repelente  
al agua



ARMY 9805 | SB12



CAFÉ FOOT 9500 | MOKA

**Revilla**<sup>MR</sup>  
SINTETICOS & BONDEADOS

# MICROPIEL

USAR EN:



Industrial

NEGRO | CORTEZA

## CARACTERÍSTICAS

Apto para: Corte

Espesor: 1.8 a 2.0 mm



Rollo: 1.40m x 40m

CAMALEÓN REY9809 | SR6

**Revilla**<sup>MR</sup>  
SINTETICOS & BONDEADOS

# MICROPEIL



Transpirable



Poliuretano  
Microfibra



Resistente a  
rayaduras



Repelente  
al agua



GRIS CLARO | EX20



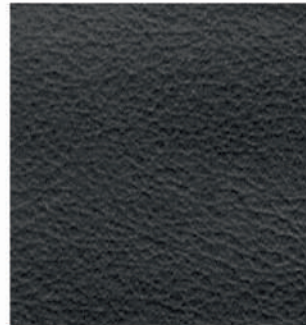
CAFE COFFEE 9387 | R18



NEGRO | BOVI



GRIS ACERO 9461 | MOKA



NEGRO | RM26



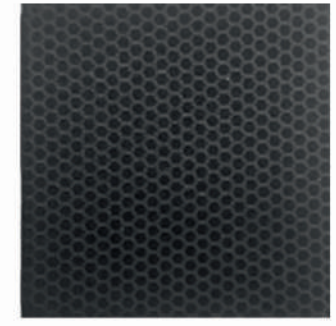
NEGRO PLATA 9225 | MALLA



NEGRO TACTO GRASO | R97



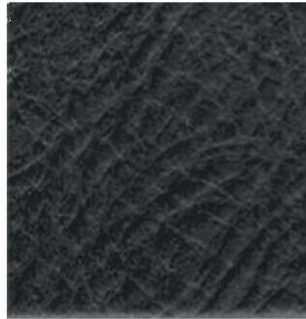
NEGRO | NITROX



NEGRO | REX



NEGRO | F14



NEGRO | KR46



NEGRO | MOKA

**Revilla**<sup>MR</sup>  
SINTETICOS & BONDEADOS

# MICROPEIL



Transpirable



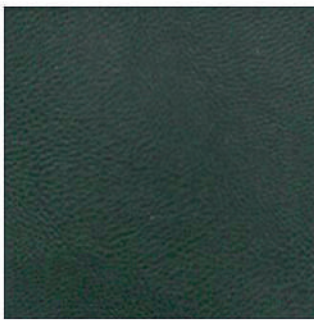
Poliuretano  
Microfibra



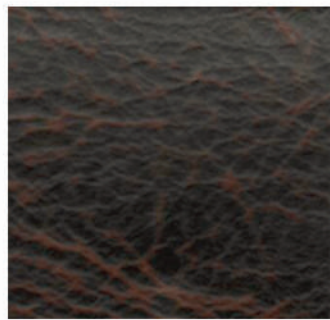
Resistente a  
rayaduras



Repelente  
al agua



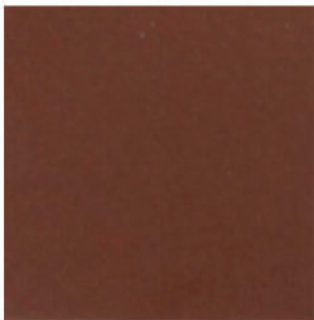
VERDE BANDERA 9650 | R97



CAFÉ MILITAR | KR46



VERDE OLIVO | BOVI



AMBAR 9591 | MOKA



DOE 9767 | R97



BLANCO | ORANGE

**Revilla**<sup>MR</sup>  
SINTETICOS & BONDEADOS



# MICROPEIL



Transpirable



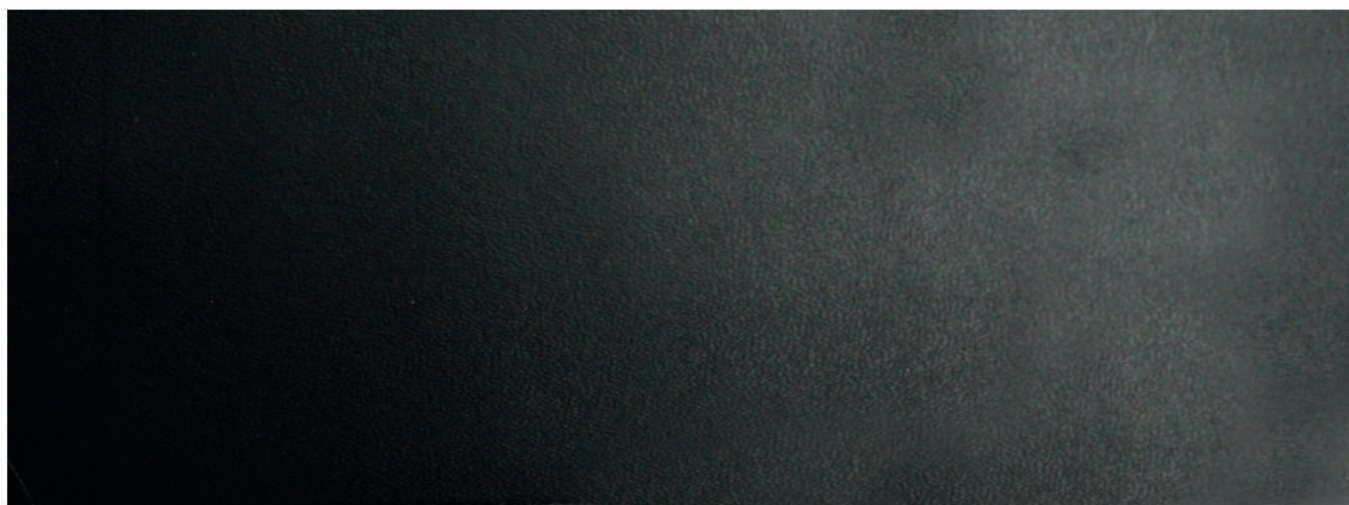
Poliuretano  
Microfibra



Resistente a  
rayaduras



Repelente  
al agua



NEGRO | R8

**Revilla**<sup>MR</sup>  
SINTETICOS & BONDEADOS

# ULTRAPIEL

USAR EN:



Escolar



NEGRO | BOVI

## CARACTERÍSTICAS

Apto para: Corte y Aplicación

Espesor: 1.4 a 2.0mm

Crupon: 1,200 a 1,700 dm2



CAFÉ CLÁSICO | BL3



**Revilla**<sup>MR</sup>  
SINTETICOS & BONDEADOS

# ULTRAPIEL



PU/ PVC  
Carnaza



Resistente



BARELY BLUE 9852 | SR6



NEGRO | MINI

**Revilla**<sup>MR</sup>  
SINTETICOS & BONDEADOS

# GAMUZA

USAR EN:



Deportivo Urbano

## CARACTERÍSTICAS

Apto para: Corte y aplicación

Espesor: 1.2 -1.8 mm

Crupon: 1,200 a 1,700 dm<sup>2</sup>



NEGRO HIDROFUGADA



ROJO



**Revilla**<sup>MR</sup>  
SINTETICOS & BONDEADOS

# GAMUZA



PERRY



MENTA



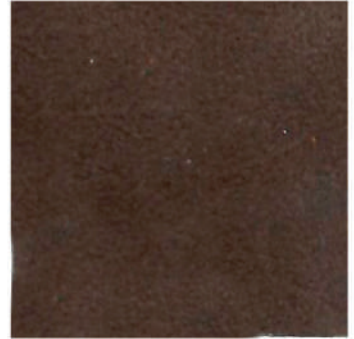
INSENCE



MIEL



TOPO



MARRÓN



ARMY



CAFÉ



Textura  
afelpada



Resistente

# GAMUZA



Textura  
afelpada



Resistente



AZUL REY



PACÍFICO



VIOLETA



VAINILLA

# GAMUZA



Textura  
afelpada



Resistente



HIELO



GRIS CLARO



GRIS OXFORD



TINTO 9807



ROSA



# MICRONIKE

USAR EN:



Deportivo Urbano

## CARACTERÍSTICAS

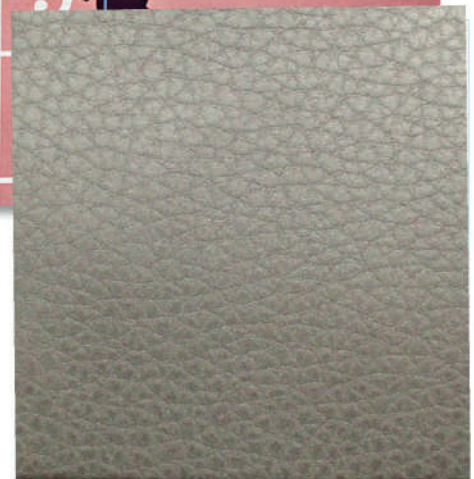
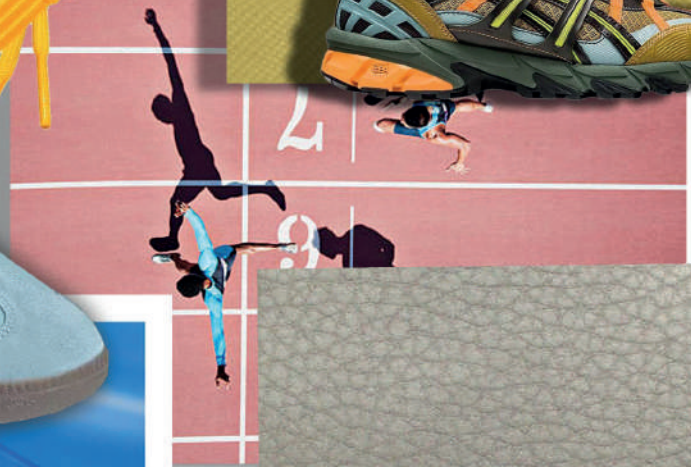
Apto para: Corte

Espesor: 1.4 mm



Rollo: 1.40m x 40m

AZUL ENSUEÑO 9822 | MOKA



SOLAR GOLD 9453 | EX20

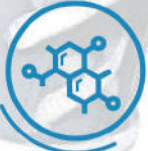
**Revilla**<sup>MR</sup>  
SINTETICOS & BONDEADOS



# MICRONIKE



Absorbente



Retardante  
a la hidrolisis



Poliuretano  
Microfibra



Repelente  
al agua



ROSA PASTEL 8930 | F 14



GRIS 6858 | MF 14



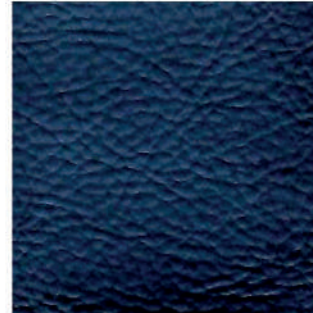
TRASCENDENT PINK 9662 | MF14



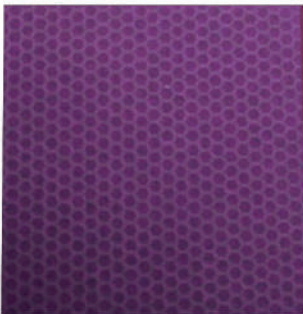
AMARILLO PASTEL 9954 | MINI



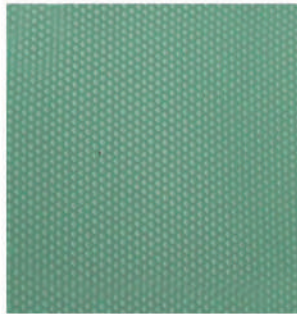
FUTURE DUSK 9601 | D7



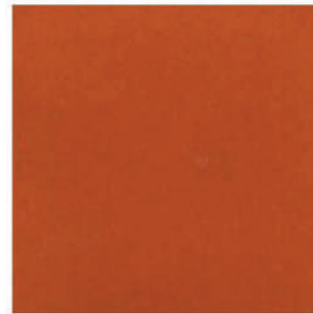
NEGRO TORNASOL 9717 | RM27



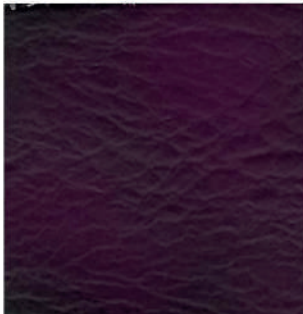
MORADO 9726 | REX



ACUATIC AWE 9663 | R14



SUNSET CORAL 9664 | MOKA



CHERRY LACQUER 9530 | MR46



DURAZNO 9667 | R8



LADRILLO 9483 | R18

**Revilla**<sup>MR</sup>  
SINTETICOS & BONDEADOS

# NIKELEX

USAR EN:



Deportivo Urbano

## CARACTERÍSTICAS

Apto para: Corte

Espesor: 1.4 mm



Rollo: 1.40m x 40m

TORNASOL 9729 | RM26

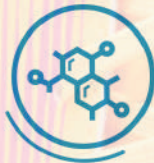
ORO ARTICO 9718 | RM27

**Revilla**<sup>MR</sup>  
SINTETICOS & BONDEADOS

# NIKELEX



Poliuretano  
Nylon + Poliester



Retardante  
a la hidrolisis



Resistente



Repelente  
al agua



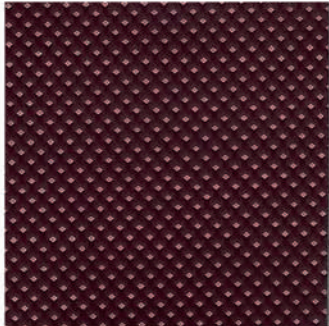
ROSA 9411 | D34



CORAL 8302 | SILKY M



CASSIS | D21



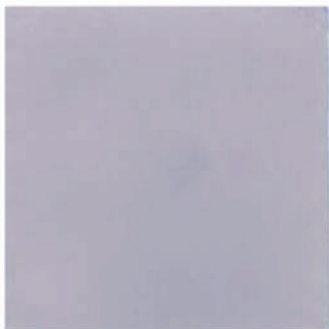
VINO ROSA 9812 | MALLA



ROSA 9318 | R8



ROJO COMETA 9259 | MOKA



LILAC | SILKY M



ACID GOLD 90530 | PIRAMIDE



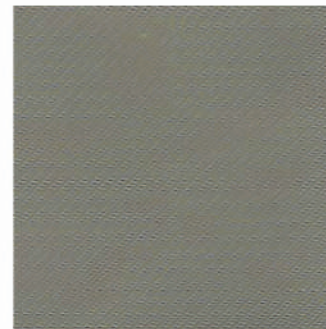
VERDE PERRY | D34



ROJO 9346 | D34



MARFIL 9826 | R97

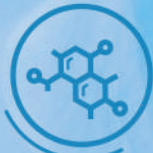


MALTEADA 9478 | WRANGLER

# NIKELEX



Poliuretano  
Nylon + Poliester



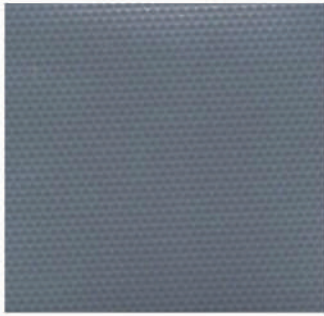
Retardante  
a la hidrolisis



Resistente



Repelente  
al agua



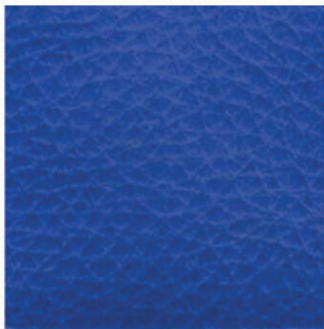
FLINT STONE 9020 | R14



AZUL 7255 | D34



DIAMANTE 5244 | D34



ORCHIDIA | D7



REY NACARADO | SILKY M



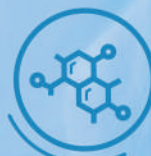
AZUL JAVA 7540 | MOKA



# NIKELEX



Poliuretano  
Nylon + Poliester



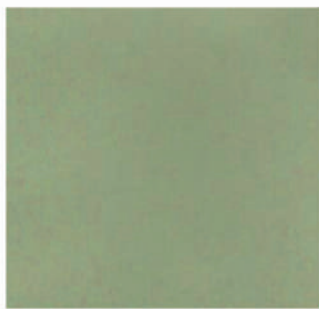
Retardante  
a la hidrolisis



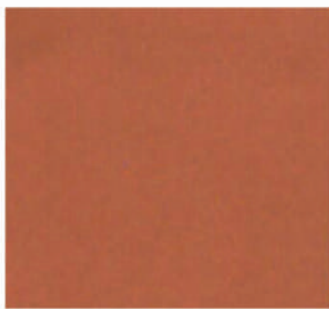
Resistente



Repelente  
al agua



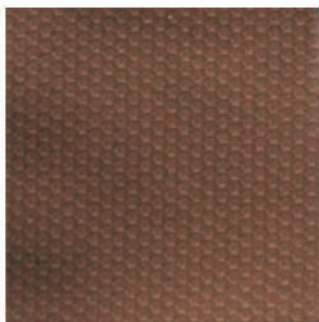
VERDE SECO 9203 | MOKA



ORANGE 8331 | MOKA



MELÓN 8346 | SILKY M



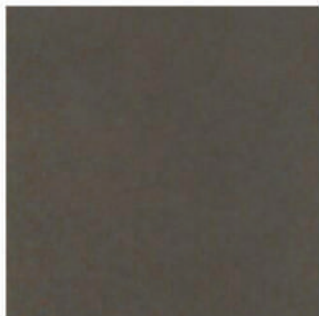
ORO VIEJO 9777 | REX



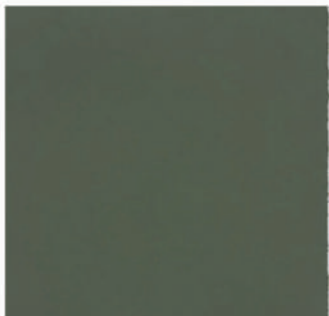
CHEDRON 9308 | D34



INSENCE | D21



BASS VERDE 9765 | MOKA



VERDE PINO 9058 | SILKY M



VERDE AUSTRALIA | SILKY M



# BASS

USAR EN:



Deportivo Urbano



BANANA | SILKY M



VINO 9692 | SILKY M

## CARACTERÍSTICAS

Apto para: Corte y aplicación

Espesor: 1.4 mm

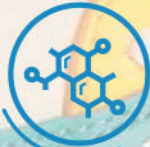
Rollo : 1.40m x 40m

**Revilla**<sup>MR</sup>  
SINTETICOS & BONDEADOS

# BASS



Poliuretano  
Nylon + Poliester



Retardante  
a la hidrolisis



Resistente



Repelente  
al agua



GRIS OXFORD 9833 | R51



NEGRO | R51



MARINO 8286 | R51



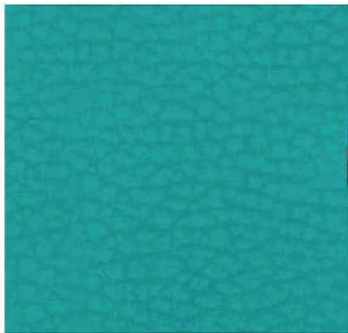
INDIGO 7021 | MOKA



ORO ROSA 8824 | RM 27



MAQUILLAJE 7415 | RM 26



VERDE 9351 | EX 20



TURQUESA | RM 26



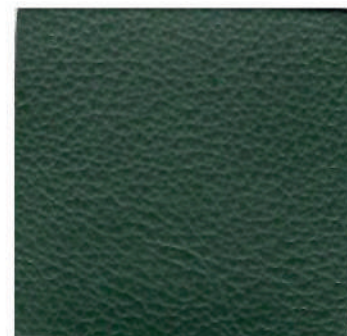
ICE BLUE | R8



LEMON | R26



MORAS | SILKY M



VERDE BRUSH | R26

# SPORT

USAR EN:



Deportivo

Urbano



BLANCO 9784 | SR6

## CARACTERÍSTICAS

Apto para: Corte

Espesor: 1.4 mm



Rollo: 1.40m x 40m



RETRO BLUE 9816 | PIRAMIDE

**Revilla**<sup>MR</sup>  
SINTETICOS & BONDEADOS



# SPORT



Resistente



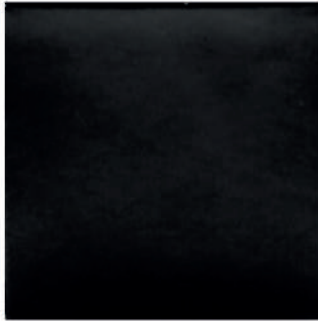
Retardante  
a la hidrolisis



Poliuretano  
Microfibra



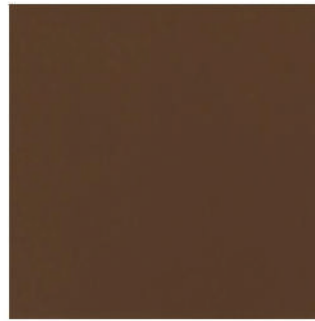
Repelente  
al agua



NEGRO | SILKY-M



VERDE 9770 | EX20



CAJETA 9713 | MOKA



NEGRO | F-14

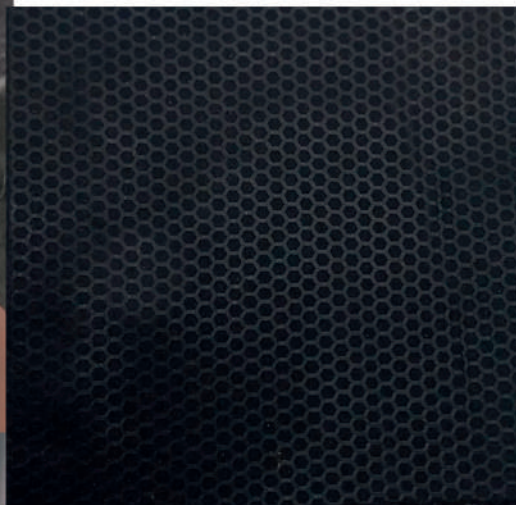
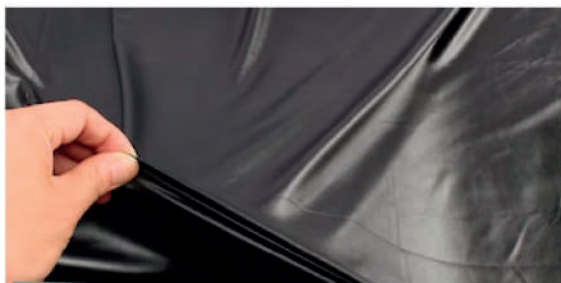
**Revilla**<sup>MR</sup>  
SINTETICOS & BONDEADOS

# CANGURO

USAR EN:



Aplicaciones



NEGRO | REX



VERE GLASS 9072 | SILKY M

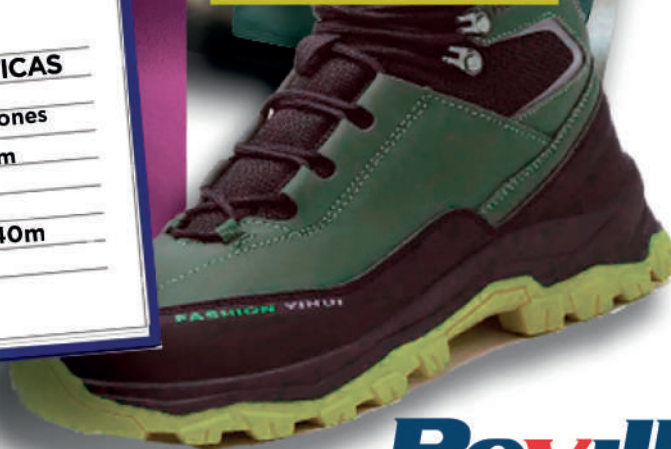


## CARACTERÍSTICAS

Apto para: Bullones

Espesor: 1.0 mm

Rollo: 1.40m x 40m



**Revilla**<sup>MR</sup>  
SINTETICOS & BONDEADOS

# CANGURO



Poliuretano  
Coagulado



Resistente



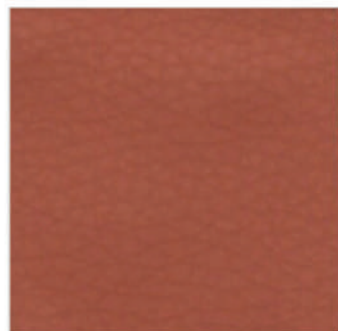
Flexible



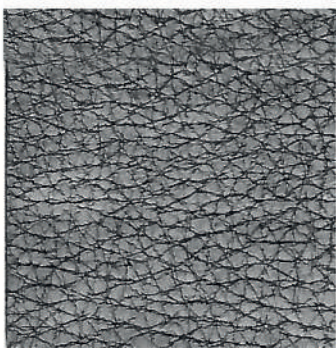
ROSE 9085 | RM26



LOOPER NAC 9455 | SILKY M



SIENNA 9456 | EX20



PLATA NEGRO | D20



BLANCO 8 | SILKY M



PLATA ESPACIAL | SILKY M



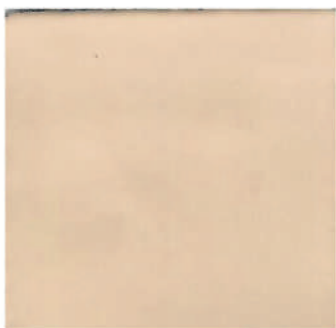
VERDE SOLDADO | MOKA



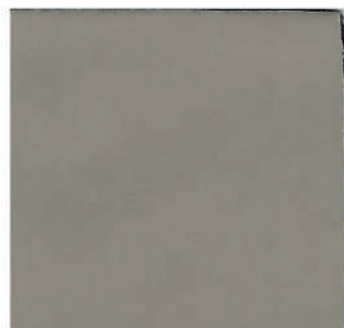
NEGRO | EX20



CIELO NAC 9019 | SILKY M



CHAMPANGE 9459 | SILKY M



MALTEADA 9478 | SILKY M



CAFÉ AMERICANO | R97

**Revilla**<sup>MR</sup>  
SINTETICOS & BONDEADOS

# HISPANA

USAR EN:



Deportivo



... DETONADOR | F14

ORO MARINO 9822 | MALLA

**CARACTERÍSTICAS**  
Apto para: Corte  
Espesor: 1.0 mm  
Rollo: 1.40m x 40m

# HISPANA



Poliuretano  
Coagulado



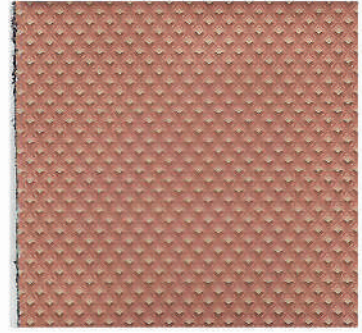
Repelente  
al agua



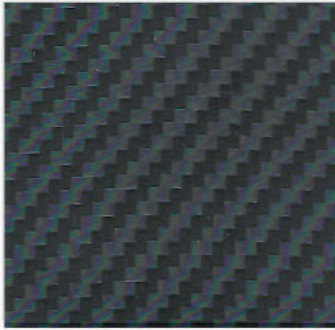
MALVAVISCO | D34



BEIGE 9750 | R97



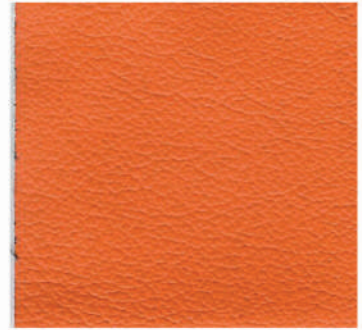
CORAL BEIGE 9818 | MALLA



CASTILLO 5914 | FOX



AZUL BANDERA | EX20



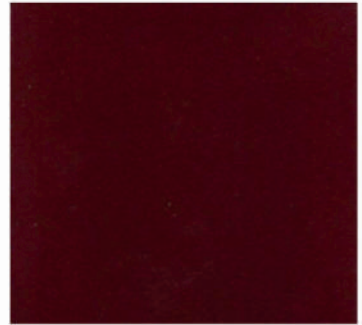
NARANJA FLAMA 8856 |  
ORANGE



LAVANDA | MF14



VIOLETA | BL3



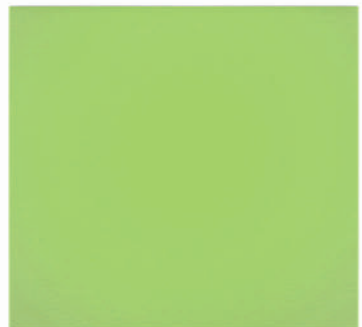
GUINDA | MOKA



SAFETY YELLOW | BL3



GRASS 9345 | BL3



LEMON | BL3

**Revilla**<sup>MR</sup>  
SINTETICOS & BONDEADOS

# FIESTO

USAR EN:



Deportivo

## CARACTERÍSTICAS

Apto para: Corte

Espesor: 0.7 mm



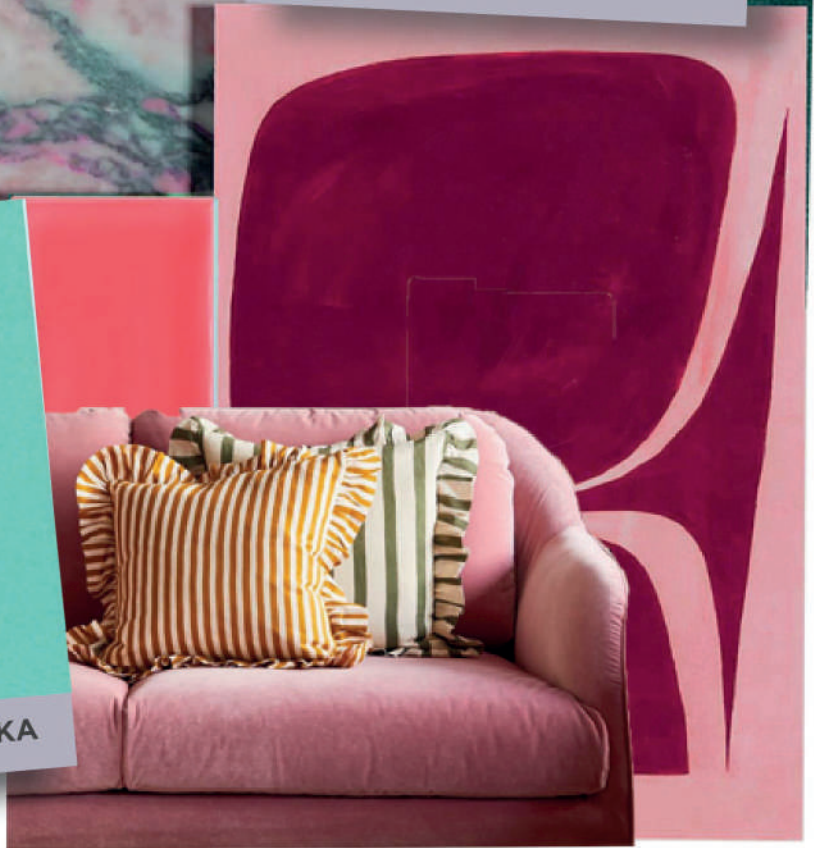
Rollo: 1.40m x 40m



CHILIPEPER 9001 | RM 26



AQUA MARINA 9164 | MOKA



# FIESTO



Poliuretano  
coagulado



SADSET PINK 9013 | RM26



ROSA | R61



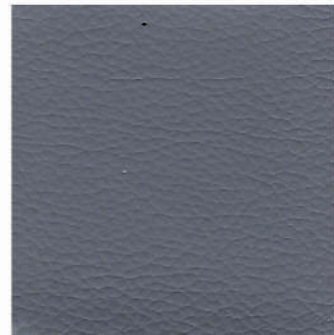
FRAGANT LILAC 9017 | RM26



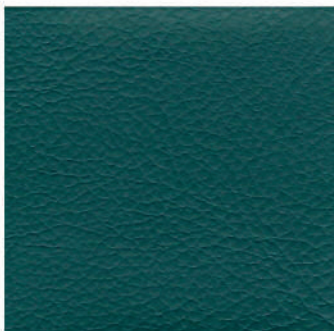
FADED DENIM 9019 | RM26



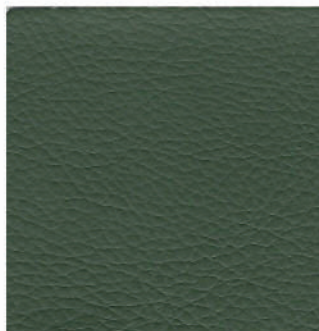
ICE AQUA | RM26



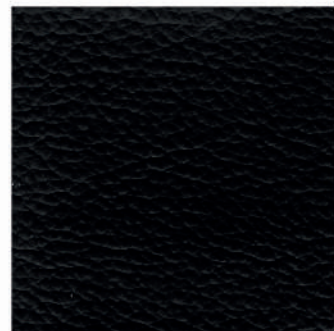
BLUE GRAY | RM26



SHADED SPACE 9007 | RM26



FOUR LEFT 9003 | RM26



NEGRO | RM26



# PREMIUM

USAR EN:



Deportivo

Industrial

CAFÉ CHOCOLATE | R26

BLANCO 2576 | SR6

## CARACTERÍSTICAS

Apto para: Aplicación y lengüeta

Espesor: 1.2 mm

Rollo : 1.40m x 40m



**Revilla**<sup>MR</sup>  
SINTETICOS & BONDEADOS



# PREMIUM



PVC  
Poliester



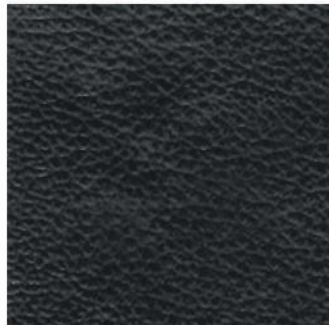
Resistente



Flexible



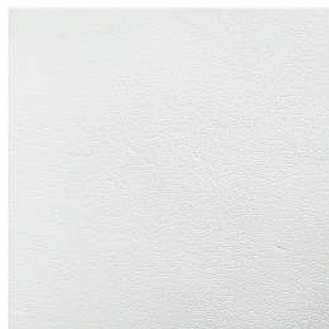
NEGRO | RM26



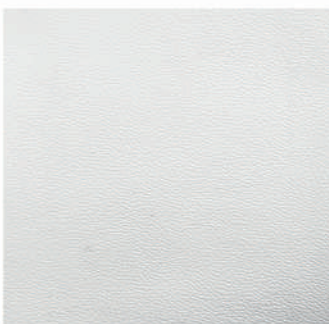
NEGRO | R 26



NEGRO | SR6



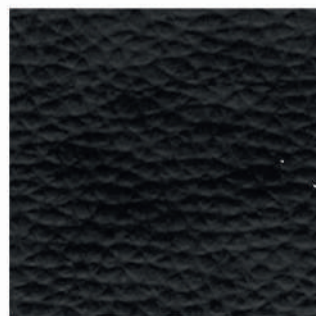
BLANCO | MF14



BLANCO 08 | SB12



CAFÉ MACADAMIA | RM26



NEGRO | D20

# EXCELL

USAR EN:



Deportivo

Industrial



CAFÉ 01 | PIRAMIDE



NEGRO | PIRAMIDE



## CARACTERÍSTICAS

Apto para:  
Aplicación y cuellos

Espesor: 1.0 mm

 Rollo : 1.40m x 40m

**Revilla**<sup>MR</sup>  
SINTETICOS & BONDEADOS

EXCELL



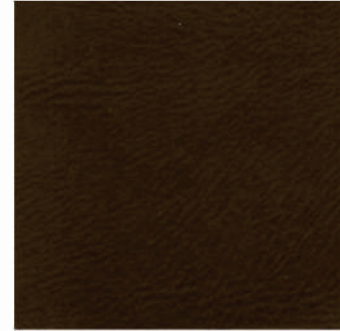
PVC  
Poliéster



Resistente



Flexible



CAFÉ 01 | SR6



NEGRO | SR6



NEGRO | MALLA

**Revilla**<sup>MR</sup>  
SINTETICOS & BONDEADOS

# TUBULARE

USAR EN:



Industrial



Deportivo

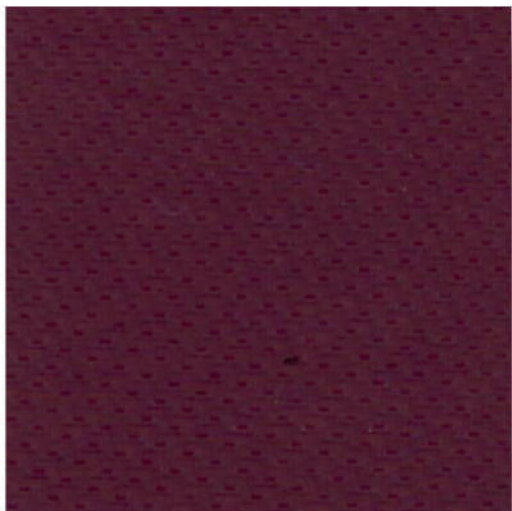
## CARACTERÍSTICAS

Apto para: Aplicación  
lengueta

Espesor: 0.45mm



Rollo: 1.40m x 40m



VINO 9168 | NITROX



ARENILLA 9657 | R10



**Revilla**<sup>MR</sup>  
SINTETICOS & BONDEADOS

# TUBULARE



MALVAVISCO 9062 | F14



Poliuretano  
Poliester



Repelente  
al agua



ROSA PASTEL NACARADO  
9347 | F14



ROSA TOASTED | R10



ORO ALASKA | F14



NEGRO | RS6

# VITAPIEL

USAR EN:



Deportivo



Industrial



BLANCO 08 | SR6



## CARACTERÍSTICAS

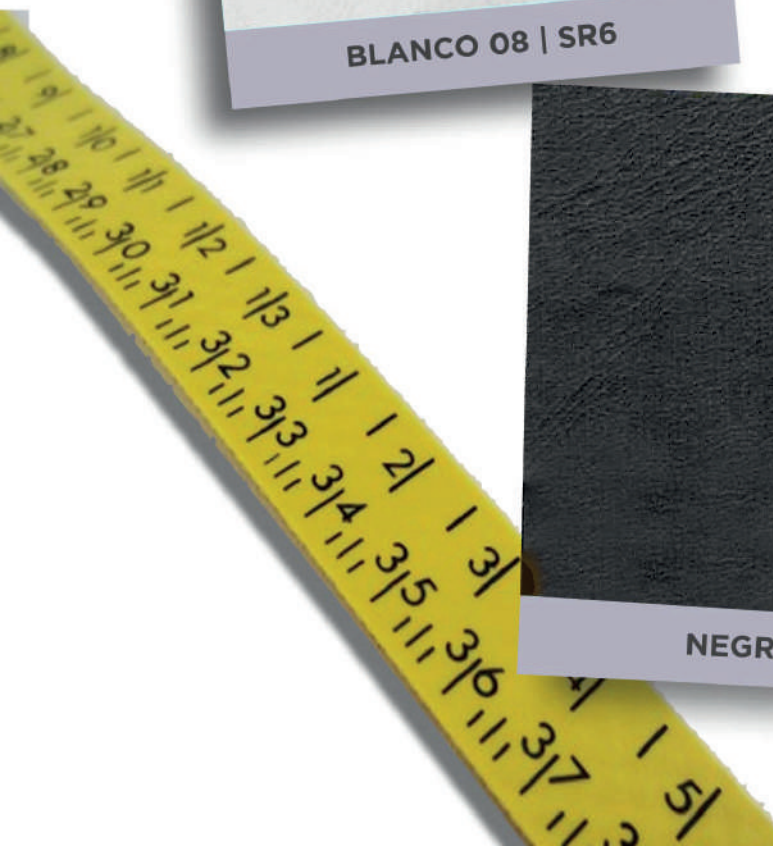
Apto para:  
Aplicación y lengüeta

Espesor: 0.6 mm

Rollo : 1.40m x 40m



NEGRO | D7



**Revilla**<sup>MR</sup>  
SINTETICOS & BONDEADOS

# VITAPIEL



PU/PVC  
Poliéster



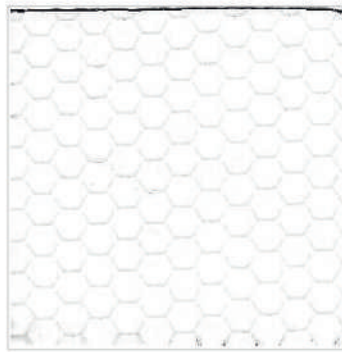
Resistente



Flexible



BLANCO | D7



BLANCO 08 | DS5



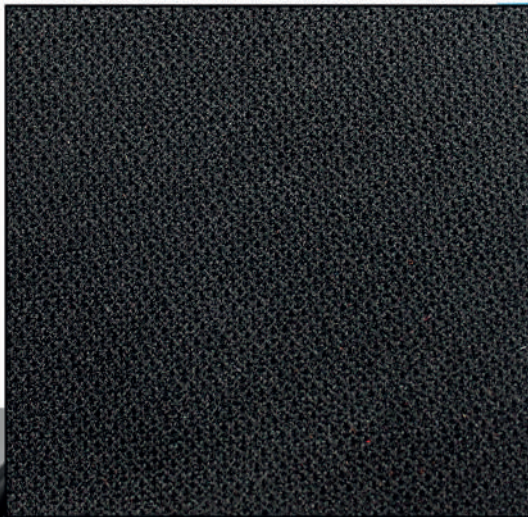
PLATA ESPACIAL 9716 | SB12

# MALLA 3D

USAR EN:



Plantilla



NEGRO



## CARACTERÍSTICAS

Apto para: Forro y plantilla  
Espesor: 0.6 mm

Rollo: 1.20 x 40m



**Revilla**<sup>MR</sup>  
SINTETICOS & BONDEADOS



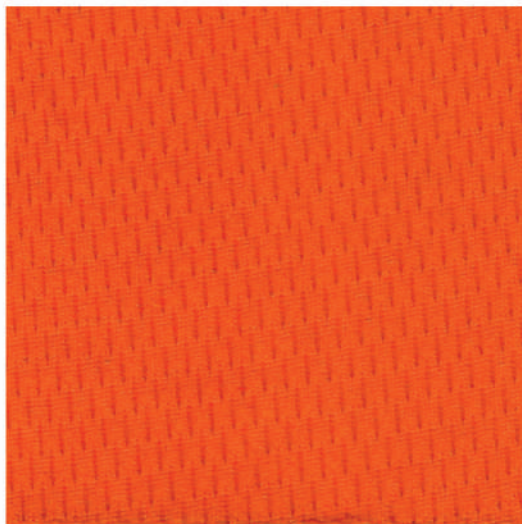
# MALLA 3D



PU  
Poliester



Resistente



NARANJA



ROJO

**Revilla**<sup>MR</sup>  
SINTETICOS & BONDEADOS

**VISITA NUESTRO  
SHOWROOM**

**gruporevilla.com  
+52(477) 4541557**

**Revilla** MR

**SINTETICOS & BONDEADOS**